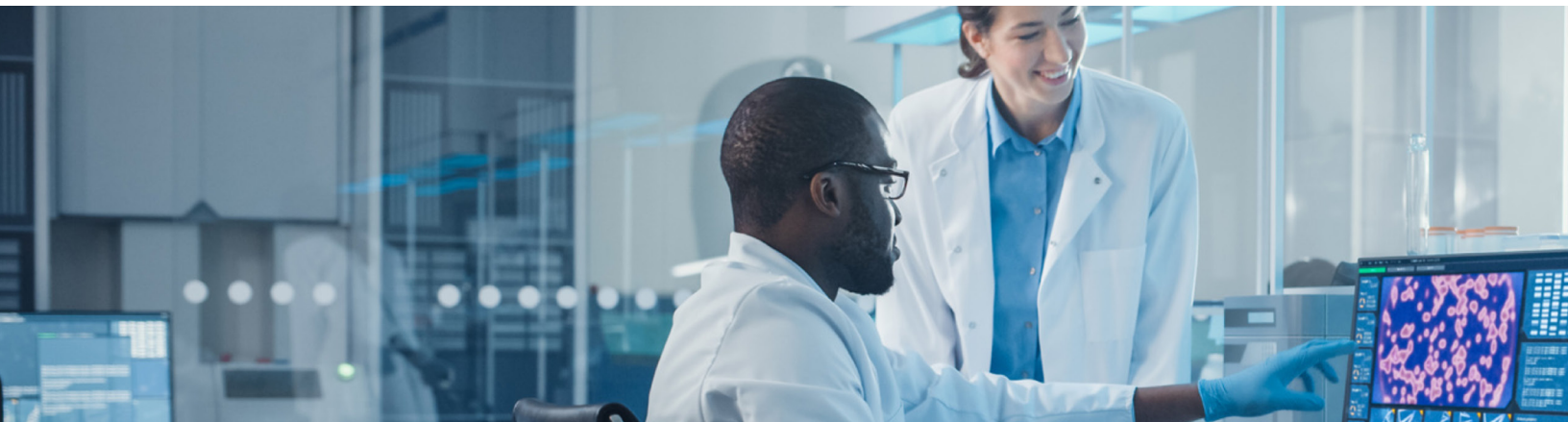




# PDE ASSAYS LIST

ASSAY NAME	APPROVED NAME	LONG NAME	SYNONYMS
PDE1A1	PDE1A1	phosphodiesterase 1A	phosphodiesterase 1A, calmodulin-dependent
PDE1B	PDE1B	phosphodiesterase 1B	PDES1B, phosphodiesterase 1B, calmodulin-dependent
PDE1C	PDE1C	phosphodiesterase 1C	Hcam3
PDE2A	PDE2A	phosphodiesterase 2A	-
PDE3A	PDE3A	phosphodiesterase 3A	CGI-PDE
PDE3B	PDE3B	phosphodiesterase 3B	HcGIP1
PDE4A1A	PDE4A1A	phosphodiesterase 4A	DPDE2, phosphodiesterase E2 dunce homolog (Drosophila)
PDE4B1	PDE4B1	phosphodiesterase 4B	cAMP-specific 3',5'-cyclic phosphodiesterase 4B, phosphodiesterase E4 dunce homolog (Drosophila), DPDE4
PDE4B2	PDE4B2	phosphodiesterase 4B	cAMP-specific 3',5'-cyclic phosphodiesterase 4B, phosphodiesterase E4 dunce homolog (Drosophila), DPDE4
PDE4C1	PDE4C1	phosphodiesterase 4C	phosphodiesterase E1 dunce homolog (Drosophila), DPDE1
PDE4D2	PDE4D2	phosphodiesterase 4D	phosphodiesterase E3 dunce homolog (Drosophila), DPDE3
PDE4D3	PDE4D3	phosphodiesterase 4D	phosphodiesterase E3 dunce homolog (Drosophila), DPDE3
PDE4D7	PDE4D7	phosphodiesterase 4D	phosphodiesterase E3 dunce homolog (Drosophila), DPDE3
PDE5A1	PDE5A1	phosphodiesterase 5A	phosphodiesterase 5A, cGMP-specific
PDE6C	PDE6C	phosphodiesterase 6C	ACHM5, COD4, PDEA2, phosphodiesterase 6C, cGMP-specific, cone, alpha prime
PDE7A1	PDE7A1	phosphodiesterase 7A	HCP1
PDE7B	PDE7B	phosphodiesterase 7B	-
PDE8A1	PDE8A1	phosphodiesterase 8A	HsT19550
PDE9A2	PDE9A2	phosphodiesterase 9A	-
PDE10A1	PDE10A1	phosphodiesterase 10A	cAMP and cAMP-inhibited cGMP 3',5'-cyclic phosphodiesterase 10A



### PDE ASSAYS LIST (CONTINUED)

ASSAY NAME	APPROVED NAME	LONG NAME	SYNONYMS
PDE10A2	PDE10A2	phosphodiesterase 10A	cAMP and cAMP-inhibited cGMP 3',5'-cyclic phosphodiesterase 10A
PDE11A4	PDE11A4	phosphodiesterase 11A	-

*Making tomorrow safer than today*